



Mountain State Genealogy
Jill Leonard Nock
26401 Tera View Drive, Culesac, Idaho 83524
info@mntstgen.com / (208) 843-9998

Using DNA to Find Harrison Johnson's Biological Father

Prepared for: Self

Subject: Harrison Johnson

Date: 29 May 2024

Objective

The objective of this research project is to test the hypothesis that Uriah Johnson was the biological father of Harrison Johnson through DNA evidence. Uriah Johnson was born circa 1771, likely in Johnston County, North Carolina, and died after 1830, probably in Hickman County, Tennessee. Uriah Johnson married Jane Carrell on 28 October 1794 in Johnston County, North Carolina. Harrison Johnson was born circa 1813 in Tennessee and died on 8 May 1898 probably in Minco, Grady County, Indian Territory (present-day Oklahoma).

Limitations

- This project was limited to previous research (see Jill Nock, AG®, “Finding a Father for Harrison Johnson: Indirect Evidence Supports an Authored Source,” dated 1 February 2024) and the four-month Research Like a Pro with DNA Study Group.
- Autosomal DNA (atDNA) analysis was limited to the atDNA results of the author, her two full siblings, three paternal first cousins, and two paternal second cousins as “test takers.” DNA matches were limited to two or three per collateral line for generations four through seven to give a wide base for correlation but to keep the project manageable.
- Mitochondrial DNA (mtDNA) does not apply to this project, as males inherit their mother’s mtDNA but do not pass it to their children. Therefore, Uriah Johnson did not pass his mother’s mtDNA to Harrison, nor did Harrison pass his mother (Jane Carrell’s) mtDNA to his own children.
- Y-DNA does not apply to this project as the author does not carry the male-only Y chromosome of the Johnson line. A future project could involve tracing all-male descent from Uriah through his sons.
- DNA matches for this project tested at *Ancestry.com*. A few also tested at, or transferred their DNA to, *MyHeritage.com* which made it possible to identify shared segments and correlate information.

Summary of Results

[See “Findings & Analysis” for source-cited explanations supporting this summary.]

- Summarized previous research that pointed to Uriah Johnson as a possible father for Harrison Johnson.

- Theorized that based on a shared migration pattern Billington Johnson and Mary Ann (Johnson) Berryman were likely siblings of Harrison Johnson.
- Analyzed test-takers and DNA matches and their connections to Harrison Johnson and his probable siblings as children of Uriah Johnson.
- Diagrammed the lines of descent from Uriah Johnson to show the probability of shared cM within the correct range of cousinship.
- Discussed the Gephi network graph which showed distinct clusters of Johnson descendants pointing to Uriah Johnson as a common ancestor.
- Concluded that available documentary and genetic evidence combine to prove that Uriah Johnson was almost certainly the biological father of Harrison Johnson.

Background Information & Summary of Known Facts

Genealogical Background

Multiple online trees have either Uriah Johnson and Jane Carrell or Edward Johnson and Mary McMinn as the parents of Harrison Johnson but none cite proof.¹

Previous research theorized that Uriah Johnson and his wife, Jane Carrell, might be the parents of Harrison Johnson as found in an authored work, *Our Pioneer Heritage*.² This theory was based on the following conclusion presented in "Finding a Father for Harrison Johnson: Indirect Evidence Supports an Authored Source."³

The parents of Harrison Johnson who was born circa 1813 in Tennessee, and died on 8 May 1898, probably in Minco, Grady County, Indian Territory (now Oklahoma) could not be definitively proven due to a lack of direct evidence. The most likely candidates for Harrison's parents are Uriah Johnson and Jane Carrell; Frances Johnson; or Beckey Johnson. Time ran out before Frances or Beckey could be fully researched, however,

¹ For example: "Public Member Trees," database, Ancestry (<http://ancestry.com> : accessed 17 Oct 2023), "Adopted But Loved" family tree by wakRtalley1958, profile for Harrison Johnson (1814-1899); [Tree references "Ancestry Trees" as sole source]. Also, *ibid.*, "Kelly/Adamson" family tree by linadamsom, profile for Harrison Johnson (1813-1899); [Tree is sourced for Harrison's life events but lacks proof of parentage and has conflated two men of the same name, one of whom died in Missouri. Only source for parental details is *Geneanet Community Trees Index*]. And, *ibid.*, "Butler / Byrd Family Tree" family tree by SusieLewisByrd, profile for Harrison Johnson (1813-1899); [Tree is sourced for Harrison's life events but lacks proof of parentage and has conflated two men of the same name, one of whom died in Missouri. Only source for parental details is *Ancestry Family Trees*].

² Pauline McDonald, *Our Pioneer Heritage* (Dallas, Texas: Johnston Printing Co., 1961), 26.

³ Jill Nock, AG®, "Finding a Father for Harrison Johnson: Indirect Evidence Supports an Authored Source," 22, 1 Feb 2024; privately held by the author, Culatesac, Idaho.

preliminary information for Uriah Johnson and Jane Carrell shows them as the more likely parents.

A 1794 marriage bond unites Uriah Johnson and Jane Carrell well ahead of the births of the proposed children listed in *Our Pioneer Heritage*.⁴ Using this unsourced family book as a clue, the names and apparent ages of the purported children: Abington, Tilmon, Billington, Herrington (believed to be Harrison), Mary Ann, and Manerva Jane seem to align with the 1820 and 1830 households for Uriah Johnson.⁵ The only direct evidence of Uriah and Jane to Abington Johnson was an 1899 letter written by Abington Johnson's son, William K. Johnson to his son A.R. [Abington Ristine] Johnson.⁶ In this letter, William states that he was a son of Abington Johnson who was the son of Uriah Johnson and Jane Carr[ell].

Billington Johnson and Harrison Johnson lived in the same townships in the 1840, 1850, and 1860 censuses.⁷ Proposed sister, Mary Ann (Johnson) Berryman, moved from McNairy County, Tennessee, to Township 39 Range 21, Benton, Missouri, by 1860 where Billington and Harrison also

⁴ For marriage bond: Johnston County, North Carolina, marriage bonds, Johnson-Carrell, 28 Oct 1794; image, "Marriage bonds, v. F-K 1768-1868," *FamilySearch* (<http://familysearch.org> : accessed 11 May 2019); citing FamilySearch Library (FSL) microfilm 4364133, image 763. [Note: This collection is alphabetized by last name for volume, then semi-alphabetized within the volume.] For list of children: Pauline McDonald, *Our Pioneer Heritage* (Dallas, Texas: Johnston Printing Co., 1961), 26. **(Document 1)**.

⁵ 1820 US census, Hickman County, Tennessee, population schedule, p. 185 (penned), line 6, Uriah Johnson household; image, *Ancestry* (<http://ancestry.com> : accessed 12 May 2019); citing National Archives & Records Administration (NARA) microfilm M33, roll 122. **(Document 2)**. Also, 1830 US census, Hickman Co., TN, pop. sch., p. 257 (penned), line 21, Uriah Johnson household; image, *Ancestry* (<http://ancestry.com> : accessed 12 May 2019); citing NARA microfilm M19, roll 176. **(Document 3)**.

⁶ "Letter From W. K. Johnson to Son A. R. Johnson with Family History," contributed 4 Feb 2022 by Anita1973; "Memories," database with images, *FamilySearch* (<http://familysearch.org/tree/person/memories/G68J-6L4> : viewed 13 Aug 2023); attached to Uriah Johnson (1770–1840), Family Tree ID G68J-6L4, "Family Tree," database, *FamilySearch* (<http://familysearch.org/tree/person/details/G68J-6L4> : viewed 13 Aug 2023). **(Document 4)**.

⁷ 1840 US census, Benton Co., MO, pop. sch., Alexander, p. 64 (stamped), line 28, Billing Johnson, and line 29, Harrison Johnson household; image, *Ancestry* (<http://ancestry.com> : accessed 12 May 2019); citing NARA microfilm M704, roll 220. **(Document 5)**. Also, 1850 US census, Benton Co., MO, pop. sch., Fristo Twp., p. 283 [verso], dwell. 153, fam. 153, Billington Johnson household; image, *Ancestry* (<http://ancestry.com> : accessed 12 May 2019); citing NARA microfilm M432, roll 392. **(Document 6)**. Also, 1850 US census, Benton Co., MO, pop. sch., Fristo Twp., p. 568–569 (penned), dwell. 180, fam. 180, Harrison Johnson household; image, *Ancestry* (<http://ancestry.com> : accessed 12 May 2019); citing NARA microfilm M432, roll 392. **(Documents 7 & 7a)**. Also, 1860 US census, Benton Co., MO, pop. sch., T39R21, p. 49, dwell. 233, fam. 231, Bilington [sic] Johnson household; image, *Ancestry* (<http://ancestry.com> : accessed 12 May 2019); citing NARA microfilm M653, roll 607. **(Document 8)**. Also, *ibid.*, p. 55 (penned), dwell. 268, fam. 266, Harrison Johnson. **(Document 9)**.

lived.⁸ Mary Ann named her son Uriah Johnston Berryman.⁹ Harrison Johnson named a son Billington.¹⁰ This indirect evidence supports the likelihood that Uriah Johnson and Jane Carrell were the parents of Harrison Johnson. DNA analysis could confirm or disprove the indirect evidence.

DNA Background

DNA CONCEPTS AND TERMS

DNA research is an essential tool for genealogists who want to add more weight to their conclusions. This project utilized the author's autosomal DNA results, as well as her two full siblings, three paternal first cousins (1C), and two paternal second cousins (2C) as "test takers" and two DNA matches (Harrison3 and Michael Baney) to provide a wide base supporting Sarah Jane Johnson as the daughter of Harrison Johnson (see figure 1). All tests were taken at *Ancestry.com* and uploaded to *MyHeritage.com*. Permission was granted by each test taker and a few DNA matches to use their results. Some wished to have their identity masked and are represented by an alias.

⁸ 1860 US census, Benton Co., MO, pop. sch., T39R21, p. 54 (penned), dwell. 262, fam. 260, William Berryman; image, *Ancestry* (<http://ancestry.com> : accessed 1 Oct 2023); citing NARA microfilm M653, roll 607. **(Document 10)**.

⁹ 1850 US census, McNairy Co., TN, pop. sch., 6th District, p. 15 [verso], dwell. 196, fam. 196, 7-year-old Johnston Berryman in William Berryman household; image, *Ancestry* (<http://ancestry.com> : accessed 1 Oct 2023); citing NARA microfilm M432, roll 888. **(Document 11)**. Also, 1860 US census, Benton Co., MO, pop. sch., T39R21, p. 54 (penned), dwell. 262, fam. 260, 17-year-old Uriah Berryman in William Berryman household; **(Document 10)**.

¹⁰ 1876 Missouri State census, Benton Co., pop. sch., Township 39, p. 5, line 5, Harrison Johnson household; image, *Ancestry* (<http://ancestry.com> : accessed 29 May 2024); citing Missouri State Censuses, Jefferson City, roll 1268. **(Document 12)**.

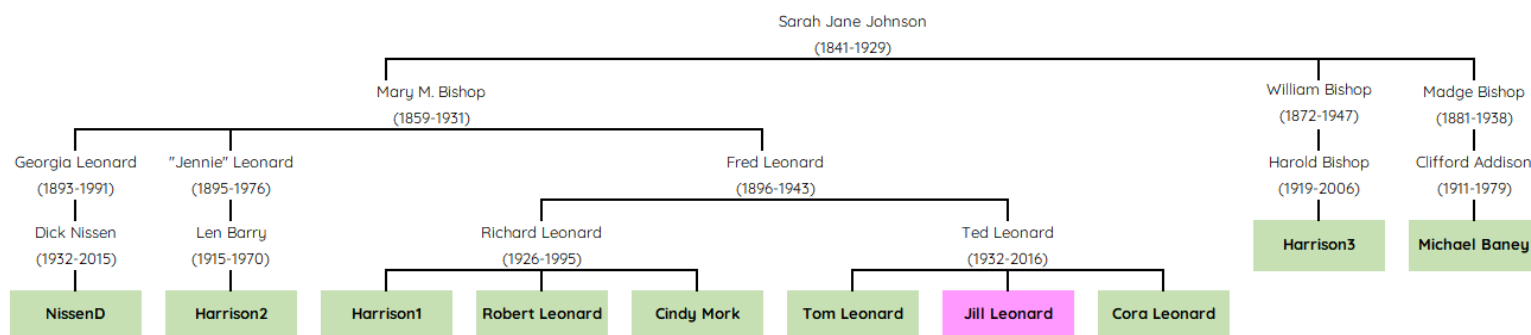


Figure 1. Test-Takers and DNA Match Descendants of Sarah Jane Johnson.

Autosomal DNA is passed down through a random mixing (recombination) of the parent's DNA, so one sibling may inherit more of one ancestor's DNA than his or her sibling does.¹¹ Each generation dilutes the ancestor's DNA by roughly half. Children receive about 50% of each parent's DNA. Grandchildren receive about 25% of their grandparent's DNA, and so on. Since the author is a fourth great-granddaughter of Uriah Johnson, she inherited only about 1.5626% of Uriah's DNA. While this is a very small amount, finding other DNA matches that have a paper trail to Uriah's other purported children can help prove the theory that Uriah Johnson was Harrison Johnson's father.

Seventeen DNA matches were chosen to represent independent children lines to prove pedigree triangulation and that they were all descendants of Uriah Johnson. DNA coverage amounts (i.e. how much of an ancestor's DNA can be "recovered" by testing his or her descendants) will be discussed with the accompanying family figures below. While many more tests could have been included to increase the overall coverage percentage, due to time limits, only twenty-five tests were used for this project. Even so, more than one-third of Uriah's DNA has been recovered through these testers.¹²

A centiMorgan (cM) is a unit of measurement assigned to a DNA segment based on the likelihood that it will recombine.¹³ Testing companies list autosomal DNA matches from highest to lowest number of shared cM. Higher numbers of cM indicate that two people are more closely related than lower cM matches. Therefore, the most recent common ancestor (MRCA) is in a closer genealogical timeframe for higher cM matches. For example, two siblings will share an average of 2,613 cM; their MRCA couple is their parents (one

¹¹ *International Society of Genetic Genealogy (ISOGG) Wiki* (<https://isogg.org/wiki/Recombination> : accessed 16 Apr 2022), "Recombination," rev. 15:46, 27 Oct 2021.

¹² "Coverage Estimator" for ancestor Uriah Johnson showing ~36.7% genome coverage; image, *DNAPainter* (<http://dnainter.com> : created 22 May 2024).

¹³ *ISOGG Wiki* (<https://isogg.org/wiki/CentiMorgan> : accessed 20 Mar 2022), "centiMorgan," rev. 22:50, 14 Dec 2020.

generation).¹⁴ Whereas, third cousins share an average of 73 cM; their MRCA couple is their great-great-grandparents (four generations).¹⁵

Locality

After the close of the Revolutionary War in 1783, western land that had previously been held by crown-granted charters was claimed by several states to the envy of several other landless states.¹⁶ Starting in 1785 a plan was formed to open this land for settlement by ceding it the government and then opening it for settlement. Following the New England model, the land was divided into thirty-six sections each containing one square mile (640 acres) and allowing settlers to choose a plot and have it surveyed. Through a series of cessions, the vast expanse of land between the Appalachian Mountains and the Mississippi River was used to create new territories and states, thus drawing migration westward as new land was opened for settlement.

Tennessee was one of the states created through this plan, and early settlement soon followed. The migratory path into Tennessee was not easy. While many rivers look to provide easy travel, those in east Tennessee are deep and were not easily forded; additional problems lay in constant Indian threats.¹⁷ A few overland roads offered alternate routes out of North Carolina and through Virginia, then through the Cumberland Gap by which many emigrants reached Kentucky and Middle Tennessee.¹⁸

Uriah Johnson married Jane Carrell in Johnston County, North Carolina.¹⁹ They moved to Maury County, Tennessee, before 10 June 1812.²⁰ Three years later, they lived in Hickman County, Tennessee (see figure 2).²¹ It is known that Harrison Johnson was born in

¹⁴ "The Shared cM Project 4.0 tool v4," *DNA Painter* (<https://dnapainter.com/tools/sharedcmv4> : accessed 20 Mar 2022), average number of cM for Sibling relationship.

¹⁵ "The Shared cM Project 4.0 tool v4," *DNA Painter* (<https://dnapainter.com/tools/sharedcmv4> : accessed 20 Mar 2022), average number of cM for 3C relationship.

¹⁶ *United States Migration to Kentucky and Tennessee 1785 to 1840 - International Institute* (https://familysearch.org/en/wiki/United_States_Migration_to_Kentucky_and_Tennessee_1785_to_1840_-_International_Institute : accessed 28 May 2024), "Securing the West for the New Nation," last updated 10:39, 27 Apr 2023.

¹⁷ *United States Migration to Kentucky and Tennessee 1785 to 1840 - International Institute* (https://familysearch.org/en/wiki/United_States_Migration_to_Kentucky_and_Tennessee_1785_to_1840_-_International_Institute : accessed 28 May 2024), "Growth in Tennessee," last updated 10:39, 27 Apr 2023."

¹⁸ Education Outreach Program, *Tennessee State Library and Archives* (<https://tnsoshistory.com/chapter2#> : accessed 28 May 2024), "Struggle for the Frontier."

¹⁹ Johnston County, North Carolina, marriage bonds, Johnson-Carrell, 28 Oct 1794; browsable images, "Marriage bonds, v. F-K 1768-1868," *FamilySearch* (<http://familysearch.org> : accessed 11 May 2019); citing FamilySearch Library (FSL) Image Group Number (DGS) 4364133, image 766. [Note: This collection is alphabetized by last name for volume, then semi-alphabetized within the volume.]

²⁰ "Maury County (Uriah Johnson)," *The Democratic Clarion & Tennessee Gazette (Nashville)*, 10 Jun 1812, p. 3, col. 2; digital image, *Newspapers.com* (<http://newspapers.com> : accessed 9 Jan 2022).

²¹ Hickman County, Tennessee, land registers, certificate no. 3254, Rias Johnson assignee of William Brumley, warrant no. 15713, 28 Sep 1815; "Tennessee, U.S., Early Land Registers, 1778-1927," database with images, *Ancestry* (<https://ancestry.com> : accessed 15 Aug 2023); citing Series 02: Entries, Tennessee State

Tennessee, but the exact county is unknown.²² Uriah Johnson presumably died in Hickman County sometime after the 1830 census.²³ One source gives 1840 as the death year for Uriah Johnson but offers no proof.²⁴

A Hickman County courthouse fire in 1865 resulted in the loss of all early records, such as deeds, wills or probate, or marriage records that may have held information for Uriah Johnson and his family.²⁵

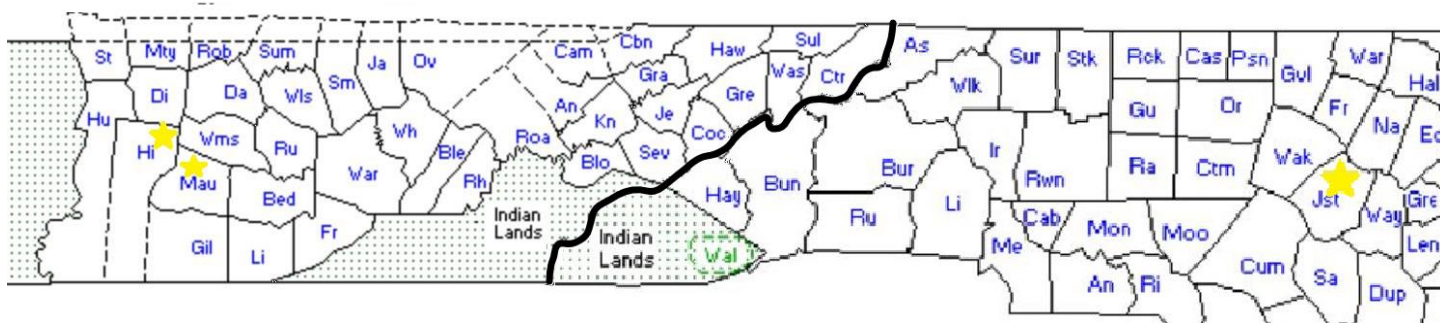


Figure 2. Johnston Co., NC & Maury and Hickman Co., TN.

Ethnicity

Ethnicity estimates among the various testers and DNA matches include the same country-wide regions of Scotland, England & Northwestern Europe, Ireland, Germanic Europe, and Wales. So, separating and defining matches by a unique region is not possible.

Methodology

Autosomal DNA test results were compared at *AncestryDNA* and *MyHeritage*. To reduce the chance of including false matches the following strategies were employed:

Library and Archives, Nashville. For figure 2 map: Interactive Map of Tennessee County Formation History, *Maps of US* (<https://mapofus.org/tennessee/> : accessed 28 May 2024), 1809. And Map of North Carolina County Formation History, *Maps of US* (<https://mapofus.org/northcarolina/> : accessed 28 May 2024), 1808.

²² 1850 US census, Benton Co., MO, pop. sch., Fristo Twp., p. 568 (penned), dwell. 180, fam. 180, Harrison Johnson household; image, *Ancestry* (<http://ancestry.com> : accessed 12 May 2019); citing NARA microfilm M432, roll 392.

²³ 1830 US census, Hickman Co., TN, p. 257 (penned), line 21, Uriah Johnson household; image, *Ancestry* (<http://ancestry.com> : accessed 12 May 2019); citing NARA microfilm M19, roll 176.

²⁴ *Find A Grave*, database with images (<http://findagrave.com> : accessed 11 Sep 2023), memorial 228678081, Uriah Johnson (1770-1840), Johnson Cemetery, Hickman County, Tennessee; memorial created by Thomas Fernwood. [No gravestone].

²⁵ Walter Fuller, President, *The Handybook for Genealogists, United States of America*, 11th Edition (Logan, Utah: Everton Publishers, 2006), 705, Tennessee, Hickman County.

- All shared matches investigated shared at least 15 cM. If matches are under 15 cM there is a chance of it being a false match.²⁶
- “The Shared cM Project” tool, which shows statistical norms, was used to identify probable relationships.

To reduce the chance of misidentifying the MRCA, the following strategies were used:

- The author's kit was uploaded to *GEDmatch*, and the “Are Your Parents Related?” tool showed a negative result for recent generations.

DNA is a good investigative tool that can be used to supplement a traditional genealogical paper trail. While DNA does not lie, as people can and do, it does need to be interpreted correctly.

Genealogical Research Findings

New research for this phase included emails to various Hickman County, Tennessee, repositories to look for any extant information on Uriah Johnson that might list his children:

- The Hickman County (TN) Library was “...unable to find anything more about Uriah Johnson that [than] what you had already found.”²⁷
- The Hickman County (TN) Historical Society responded: “While I do find his name in the 1830 census, no other records exist. I do not find him in our land deed records – it is possible he never had his deeds recorded. That is just too early of a time period for many of our records. He was not found in court minutes or guardian records – or were any of the children's names you listed.”²⁸
- The Hickman County (TN) Archivist, Rhonda Taylor, replied that she did not have anything for Uriah and said their early records were destroyed in an 1864 courthouse

²⁶ Blaine T. Bettinger, “The Danger of Distant Matches,” *The Genetic Genealogist* (<https://thegeneticgenealogist.com/2017/01/06/the-danger-of-distant-matches/> : accessed 4 Nov 2022).

²⁷ Mina Dressler, CPLM - Director, Hickman County Library System, Centerville, Tennessee [E-ADDRESS FOR PRIVATE USE], to Jill Nock, email, 22 Apr 2024, “Uriah Johnson/Johnston,” Correspondence, Harrison Johnson Research Files; privately held by the author, [(E-ADDRESS) & STREET ADDRESS FOR PRIVATE USE], Culatesac, Idaho.

²⁸ Gary Waddey, President, Hickman County Historical Society, Centerville, Tennessee [E-ADDRESS FOR PRIVATE USE], to Jill Nock, email, 26 Apr 2024, “Vertical File: Uriah Johnson,” Correspondence, Harrison Johnson Research Files; privately held by Nock, [(E-ADDRESS) & STREET ADDRESS FOR PRIVATE USE], Culatesac, Idaho.

fire. Also, there were still records to clean and file, and it was possible that something may still be found.²⁹

- Searches in the user-submitted files: Biographies, Cemeteries, Land, Military, and Queries on the *Hickman County TNGenWeb* produced negative results for Uriah Johnson.³⁰
- Similar searches on the *Genealogy Trails History Group's* Hickman County, Tennessee, Genealogy and History website for the following user-submitted files were also negative for Uriah Johnson: Biographies, Cemeteries, Death, Deed, Early Settler, Military, Obituary, Selected Family Research, Surnames, and Wills.³¹
- A search of the *Tennessee State Library & Archives* website was negative for Uriah Johnson (c1770-p1830).³²

Having searched online and offline repositories for Hickman County, Tennessee, with no new information added to the project, using DNA was the next possibility for determining the father of Harrison Johnson. Since Abington Johnson was proven through a historic letter to be the son of Uriah Johnson, tying Harrison and the other purported children listed in *Our Pioneer Heritage* to Abington via DNA evidence would prove that they were also the children of Uriah Johnson.

DNA Findings & Analysis

Identifying people who share DNA is an important step in proving genetic relationships. *AncestryDNA* provides a list of these shared DNA matches, however, beyond a parent/child or a full sibling relationship, *AncestryDNA* does not identify how two people are related.

As stated above, the author, her two full siblings, three paternal 1C, and two paternal 2C were the test takers for this project (see figures 3 and 4 below). Establishing the paper trail that defines their relationships was vital to proving the consanguinity through each most recent common ancestor (MRCA) to Sarah Jane (Johnson) Bishop. Additional research documented Sarah's siblings to their father Harrison Johnson, and provides the basis for tying Harrison to his purported siblings as the children of Uriah Johnson.

²⁹ Rhonda Taylor, Hickman County (TN) Archivist, [E-ADDRESS FOR PRIVATE USE], to Jill Nock, email, 29 Apr 2024, "Uriah Johnson;" Correspondence, Harrison Johnson Research Files; privately held by the author, [(E-ADDRESS) & STREET ADDRESS FOR PRIVATE USE], Culatesac, Idaho.

³⁰ *Hickman County TNGenWeb* (<https://tngenweb.org/hickman> : accessed 22 Apr 2024).

³¹ *Genealogy Trails History Group* (<https://genealogytrails.com/tenn/hickman/> : accessed 22 Apr 2024).

³² *Tennessee State Library & Archives* (tslaindexes.tn.gov/search-all-collections : accessed 7 May 2024), "Search All Collections," negative results for Uriah Johnson (c1770-p1830), including name variants.

For all figures, the author is represented with a pink background; the various test takers and DNA matches are shown with green backgrounds. A small (d) next to a name indicates that the DNA match is deceased.

Segments and Triangulation

DNA segments are passed down from parent to child. Through recombination, these segments usually become smaller in each generation.³³ If the segments are large enough, it is possible to study these segments and assign them to an MRCA or MRCA couple. There are some situations where, due to the randomness of chromosomal recombination, DNA from an ancestor does not get passed down. It is necessary to search for other descendants of that ancestor to see if the DNA was passed down in that line.

Pedigree (or tree) triangulation means that at least three people can be documented through genealogical records to descend from a common ancestor or ancestral couple. Segment triangulation means that at least three people all share the same segment of a chromosome inherited from a common ancestor or ancestral couple. The best evidence of either pedigree or segment triangulation will involve DNA test taker(s) and matches who descend through different lines from a common ancestor.

Unfortunately, there were not enough identified DNA matches of this project with DNA test results at *MyHeritage* or *GEDmatch* to adequately check for segment triangulation. DNA match Billington1 (Billington's lineage) and the author (Harrison's lineage) match on chromosomes 1, 7, 13, and 15 on *MyHeritage*.³⁴ DNA match Mary Ann2 (Mary Ann's lineage) and the author match on chromosomes 5, 8, and 22.³⁵ Mary Ann2 is the only identified match of a disparate child lineage from Uriah Johnson who has uploaded to *GEDmatch*.

Gephi Network Graph

Gephi is a network visualization software used by genetic genealogists to analyze DNA matches. The software creates network clusters by analyzing shared DNA segments and showing connections between individuals. Each cluster is shown in a unique color to help identify patterns and common ancestors that may not be apparent through traditional DNA analysis.

While the underlying gathering tool (DNAGedcom) is not working at this time, a previously gathered file contains all but two of the DNA matches used in this project. Unfortunately, DNA matches Abington1 and Abington2 (the two identified descendants of Abington

³³ ISOGG Wiki (<https://isogg.org/wiki/Recombination> : accessed 16 Apr 2022), "Recombination," rev. 15:46, 27 Oct 2021.

³⁴ Chromosome Browser, One-To-Many for Jill Nock, database report, *MyHeritage* (<https://myheritage.com/dna> : accessed 28 Dec 2023), shared matching on chromosomes 1, 7, 13, & 15 with Billington2.

³⁵ Chromosome Browser, One-To-Many for Jill Nock, database report, *MyHeritage* (<https://myheritage.com/dna> : accessed 28 Dec 2023), shared matching on chromosomes 5, 8, & 22 with Mary Ann2.

Johnson) tested at *AncestryDNA* after the spreadsheet of matches had been previously gathered so they are not represented in this graph.

Analysis of a Gephi network graph revealed a cluster of Johnson matches. Additional work produced four new subclusters representing five child lines of Uriah Johnson (see figure 3).³⁶ The largest subcluster (labeled "0") also contains descendants of two identified siblings of Uriah Johnson (children of Joel Johnson). This cluster will be helpful in a future project.

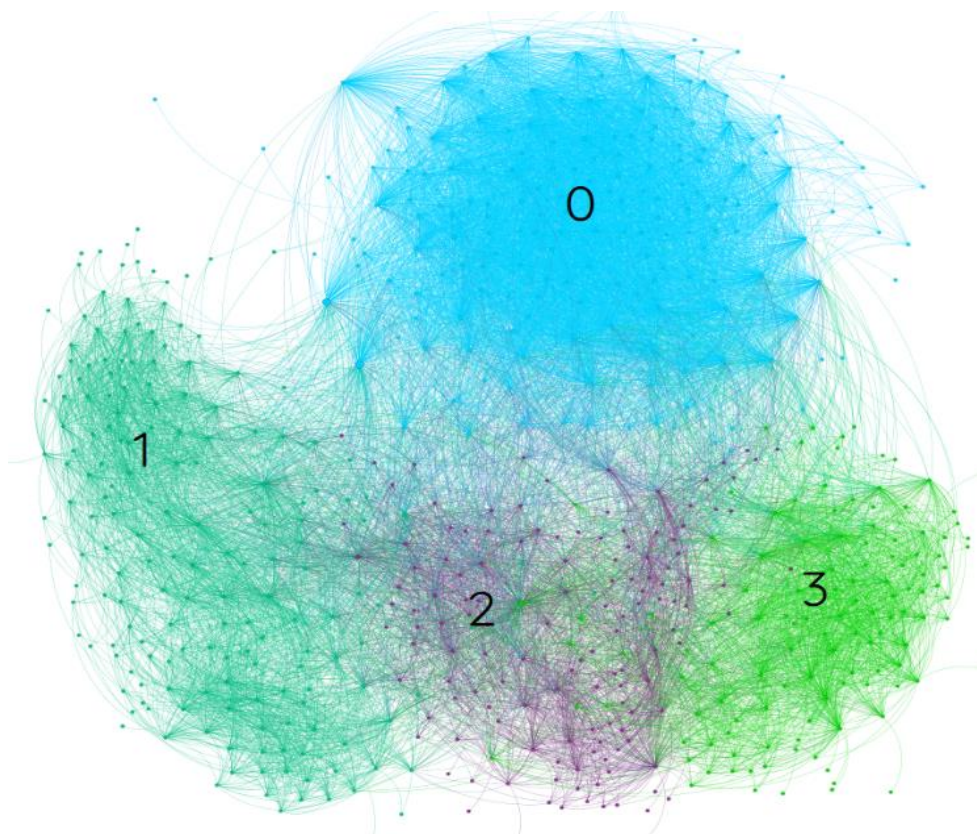


Figure 3. Gephi Network Graph Showing Johnson Subclusters 0, 1, 2, & 3.

Table 1 shows the test takers and DNA matches represented in figure 3. Note that only DNA matches from 15 cM to 351 cM were included in the original gather, so the sibling and 1C test takers are not included in either figure 3 or table 1.

³⁶ Jill Nock, "Network Graph" using *Gephi*, created 10 Apr 2024, *AncestryDNA* matches, 15-351 cM, Cluster 15; separated into subclusters 0, 1, 2, and 3.

Table 1. Gephi Network Graph Results.

Name	DNA Match Name	Ancestor Line	Cluster Number	Cluster Color
	Abington1	Abington	—	—
	Abington2	Abington	—	—
	Tilmon1	Tilmon	0	Blue
	Harrison4	Harrison	1	Blue/green
	Harrison6	Harrison	1	Blue/green
	Harrison7	Harrison	1	Blue/green
	Mary Ann1	Mary Ann	1	Blue/green
	Mary Ann2	Mary Ann	1	Blue/green
	Harrison5	Harrison	2	Purple
Clinton Cody Trammell	Clinton Cody Trammell	Harrison	2	Purple
	Tilmon2	Tilmon	2	Purple
	Manerva1	Manerva	2	Purple
	Manerva2	Manerva	2	Purple
Dick Nissen	NissenD	Harrison	3	Bright green
	Harrison2	Harrison	3	Bright green
	Harrison3	Harrison	3	Bright green
Michael Baney	Michael Baney	Harrison	3	Bright green
	Billington1	Billington	3	Bright green
	Billington2	Billington	3	Bright green

Source:

Jill Nock, "Network Graph" using Gephi, created 10 Apr 2024, AncestryDNA matches, 15-351 cM, Cluster 15; separated into subclusters 0, 1, 2, and 3.

Seeing the DNA matches in four separate clusters may help explain why Mary Ann2 in subcluster 1 and Billington1 in subcluster 3 do not triangulate on the same segments as mentioned above in the Segments and Triangulation section. If other DNA matches test or upload their *AncestryDNA* results to *MyHeritage*, more insight could be gained into this theory.

Proving the Lineages

DESCENDANTS OF FRED MERVEN LEONARD

Figure 4 shows how the amount of shared DNA among the six grandchildren of Fred Merven Leonard supports the paper trail that they are two groups of siblings who are first cousins.

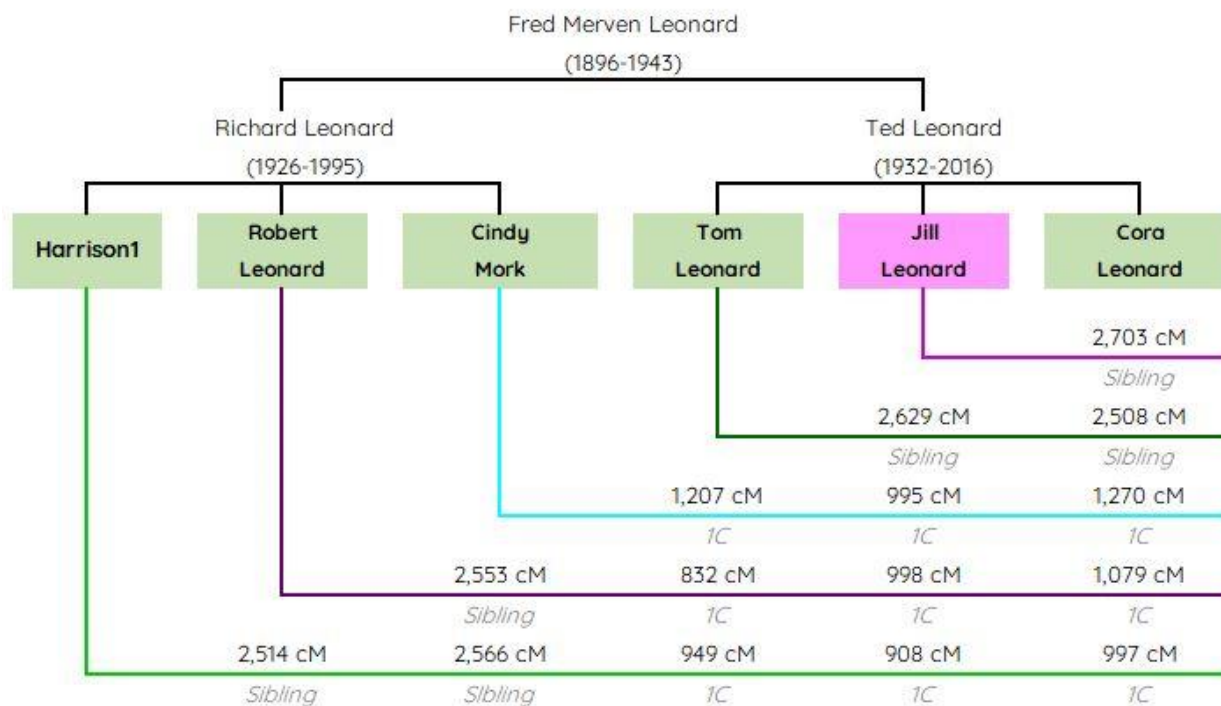


Figure 4. Correlation of Shared DNA Among Fred Leonard Descendants.
 (For relationships, see text. For shared cM, see Appendix.)

Richard Leonard's Lineage to Fred Merven Leonard

The survivors listed in Richard “Dick” Leonard’s obituary includes his children: Harrison1 (now deceased), Robert “Bob” Leonard, and Cindy (Leonard) Mork; and his brother, Ted Leonard.³⁷ The obituary for Harrison1 corroborates the information in his father’s obituary by naming his siblings, Bob Leonard and Cindy Mork.³⁸ Richard “Dick” Leonard was born on 12 November 1926 in Weippe, Clearwater, Idaho, and died on 25 February 1995 in

³⁷ “Richard J. Leonard, 68, Retired from Potlatch,” *Lewiston (Idaho) Morning Tribune*, 3 Mar 1995, p. 10A.

³⁸ “[Redacted],” *Tri-City Herald* (Pasco, Washington), 10 Jun 2018, p. 7D, col. 1-2; digital image, *Newspapers.com* (<http://newspapers.com> : accessed 10 Mar 2024).

Kennewick, Benton, Washington; he was the son of Fred Merven Leonard and Cora Inez Centers.³⁹

Ted Leonard's Lineage to Fred Merven Leonard

The obituary of Ted Leonard includes his children Thomas Leonard, Jill Nock, and Jan Eberle; and also mentioned his deceased brother, Richard "Dick" Leonard.⁴⁰ Ted Leonard being the father of Thomas, Jill, and Jan is corroborated by their birth certificates.⁴¹ Teddy Francis Leonard was born to Fred Merven Leonard and Cora Inez Centers on 13 August 1932 in Weippe; he died on 7 May 2016 in Coeur d'Alene, Kootenai, Idaho.⁴² Both Dick and Ted were listed as sons in newspaper articles regarding Fred's death.⁴³

To streamline subsequent figures, Jill Leonard will represent Fred Leonard's direct line. Note that Jan's DNA test results are listed under the name Cora Leonard, and the author's DNA results are under her maiden name, Jill Leonard.

The estimated coverage for both Richard and Ted is approximately 87.5%.⁴⁴ For Fred, the coverage is approximately 68.359%.⁴⁵

DESCENDANTS OF MARY M. BISHOP AND SARAH JANE JOHNSON

Figure 5 shows how the amount of shared DNA among the five descendants of Sarah Johnson supports the paper trail that they are 2C and 2C1R.⁴⁶

³⁹ Washington State Department of Health, death certificate no. 146, Richard Leonard, 25 Feb 1995; Washington Vital Records, Olympia. [Privately held by Cindy Mork [ADDRESS FOR PRIVATE USE], Benton City, Washington. Digital image provided to the author on 31 Dec 2021.]

⁴⁰ "Teddy Francis 'Ted' Leonard," (obituary), *Lewiston (Idaho) Tribune*, 11 May 2016, p. 7C.

⁴¹ For Tom: State of Idaho, United States Public Health Service, birth certificate no. [FOR PRIVATE USE], Thomas Francis Leonard, [DATE OF BIRTH REDACTED FOR PRIVACY]; Division of Vital Statistics, Boise. [Duplicate issued 13 Apr 1989.] For Jill: State of Washington, Department of Health, birth certificate no. [FOR PRIVATE USE], Jill Lynette Leonard, [DATE OF BIRTH REDACTED FOR PRIVACY]; Division of Vital Statistics, Olympia. For Cora Jan: Ibid., birth certificate no. [FOR PRIVATE USE], Cora Jan Leonard, [DATE OF BIRTH REDACTED FOR PRIVACY].

⁴² Idaho Department of Health and Welfare, death certificate 2016-04683, Teddy Francis Leonard, 7 May 2016; Division of Vital Statistics, Boise.

⁴³ "Fred Leonard Of Local Post Dies," *Oroville (California) Mercury Register*, Tuesday, 2 Nov 1943, p. 1, col. 6. And "Leonard Body Due In Oroville Tonight," *Oroville (California) Mercury Register*, 4 Nov 1943, p. 3, col. 7.

⁴⁴ "Coverage Estimator" for ancestor Richard Leonard showing ~87.5% genome coverage; DNAPainter (<http://dnainter.com> : created 22 May 2024). Also, *ibid.*, for ancestor Ted Leonard showing ~87.5% genome coverage.

⁴⁵ "Coverage Estimator" for ancestor Fred Leonard showing ~69.359% genome coverage; DNAPainter (<http://dnainter.com> : created 22 May 2024).

⁴⁶ For documentation of each link shown in figure 5, see "Thompson-Leonard DNA Tree," *Ancestry* (<https://ancestry.com/family-tree/tree/78707202>).

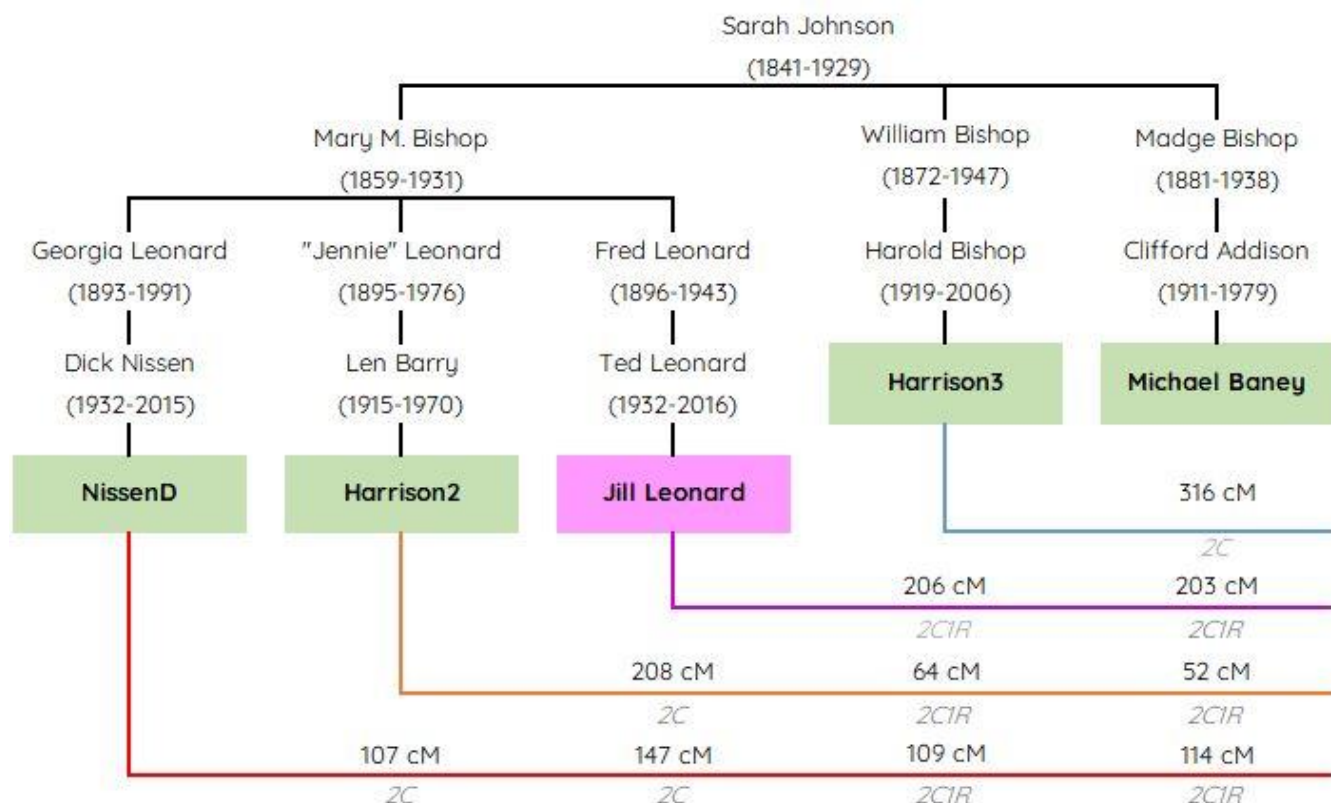


Figure 5. Correlation of Shared cM Among Sarah Johnson Descendants.
 (For shared cM, see Appendix.)

The estimated coverage for Mary M. Bishop is approximately 49.606%.⁴⁷ For Sarah Jane Johnson, the coverage is approximately 42.427%.⁴⁸ These figures include all of the DNA test takers shown in figures 4 and 5.

DESCENDANTS OF HARRISON JOHNSON

Figure 6 shows how the amount of shared DNA among the six descendants of Harrison Johnson supports the paper trail that they are Half Second Cousins Twice Removed (H2C2R) to H4C in range.⁴⁹

⁴⁷ "Coverage Estimator" for ancestor Mary M. Bishop showing ~49.606% genome coverage; DNAPainter (<http://dnainter.com> : created 22 May 2024).

⁴⁸ "Coverage Estimator" for ancestor Sarah Jane Johnson showing ~42.427% genome coverage; DNAPainter (<http://dnainter.com> : created 22 May 2024).

⁴⁹ For documentation of each link shown in figure 6, see "Thompson-Leonard DNA Tree," Ancestry (<https://ancestry.com/family-tree/tree/78707202>).

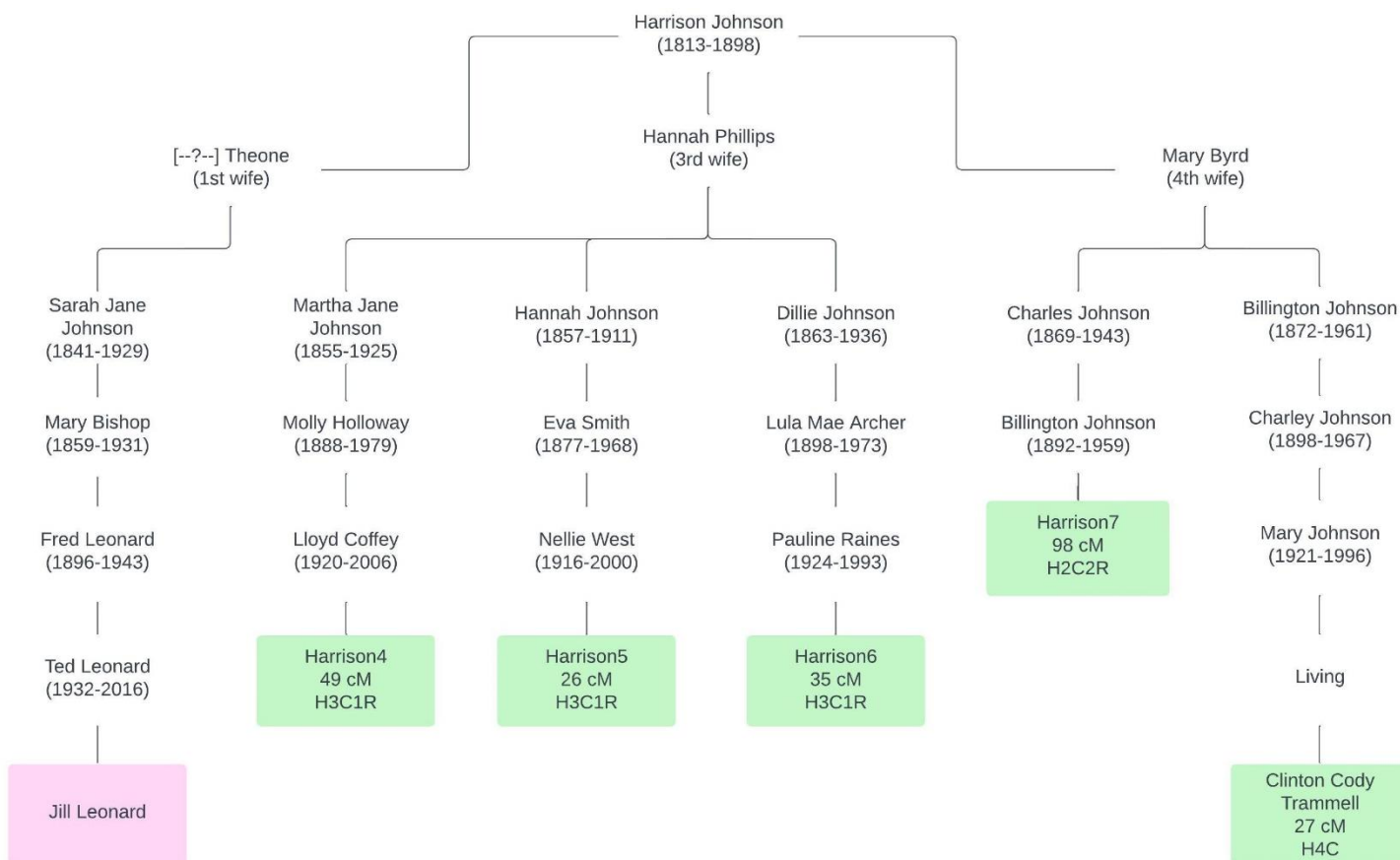


Figure 6. Correlation of Shared cM Among Harrison Johnson Descendants.
 (For shared cM with Jill Leonard, see Appendix.)

The estimated coverage for Harrison Johnson is approximately 44.972%.⁵⁰ This number includes all of the DNA test takers and DNA matches shown in figures 4, 5, and 6.

DESCENDANTS OF URIAH JOHNSON

Table 2 shows the approximate genome coverages for Uriah Johnson's proposed children. Lower numbers indicate that the DNA match is further removed from Uriah. For instance, Abington1 and Manerva1 are seven generations removed, they inherited only a very small percentage of Uriah's DNA which accounts for Abington's and Manerva's lower percentages. More DNA matches along these lines would increase the overall percentage for each child line and Uriah in total, however, to keep the project manageable, only a select few matches were chosen.

⁵⁰ "Coverage Estimator" for ancestor Harrison Johnson showing ~44.972% genome coverage; DNAPainter (<http://dnainter.com> : created 22 May 2024).

Table 2. Coverage Percentage for Uriah Johnson and Proposed Children.

Name	Number of test takers/DNA matches	Genome Coverage Percentage
Uriah Johnson ^a	25	~36.7%
Abington Johnson ^b	2	~4.639%
Tilmon Johnson ^c	2	~12.109%
Billington Johnson ^d	2	~12.109%
Harrison Johnson ^e	15	~44.972%
Mary Ann Johnson ^f	2	~6.152%
Manerva Johnson ^g	2	~4.639%

Sources:

- a. "Coverage Estimator" for ancestor Uriah Johnson showing ~36.7% genome coverage; DNAPainter (<http://dnainter.com> : created 22 May 2024).
- b. "Coverage Estimator" for ancestor Abington Johnson showing ~4.639% genome coverage; DNAPainter (<http://dnainter.com> : created 22 May 2024).
- c. "Coverage Estimator" for ancestor Tilmon Johnson showing ~12.109% genome coverage; DNAPainter (<http://dnainter.com> : created 22 May 2024).
- d. "Coverage Estimator" for ancestor Billington Johnson showing ~12.109% genome coverage; DNAPainter (<http://dnainter.com> : created 22 May 2024).
- e. "Coverage Estimator" for ancestor Harrison Johnson showing ~44.972% genome coverage; DNAPainter (<http://dnainter.com> : created 22 May 2024).
- f. "Coverage Estimator" for ancestor Mary Ann Johnson showing ~6.152% genome coverage; DNAPainter (<http://dnainter.com> : created 22 May 2024).
- g. "Coverage Estimator" for ancestor Manerva Johnson showing ~4.639 % genome coverage; DNAPainter (<http://dnainter.com> : created 22 May 2024).

Figure 7 shows how the amount of shared DNA among the twelve proposed descendants of Uriah Johnson supports the paper trail that they are likely to be H2C2R to 5C1R in range.⁵¹

⁵¹ For documentation of each link shown in figure 7, see "Thompson-Leonard DNA Tree," Ancestry (<https://ancestry.com/family-tree/tree/78707202>).

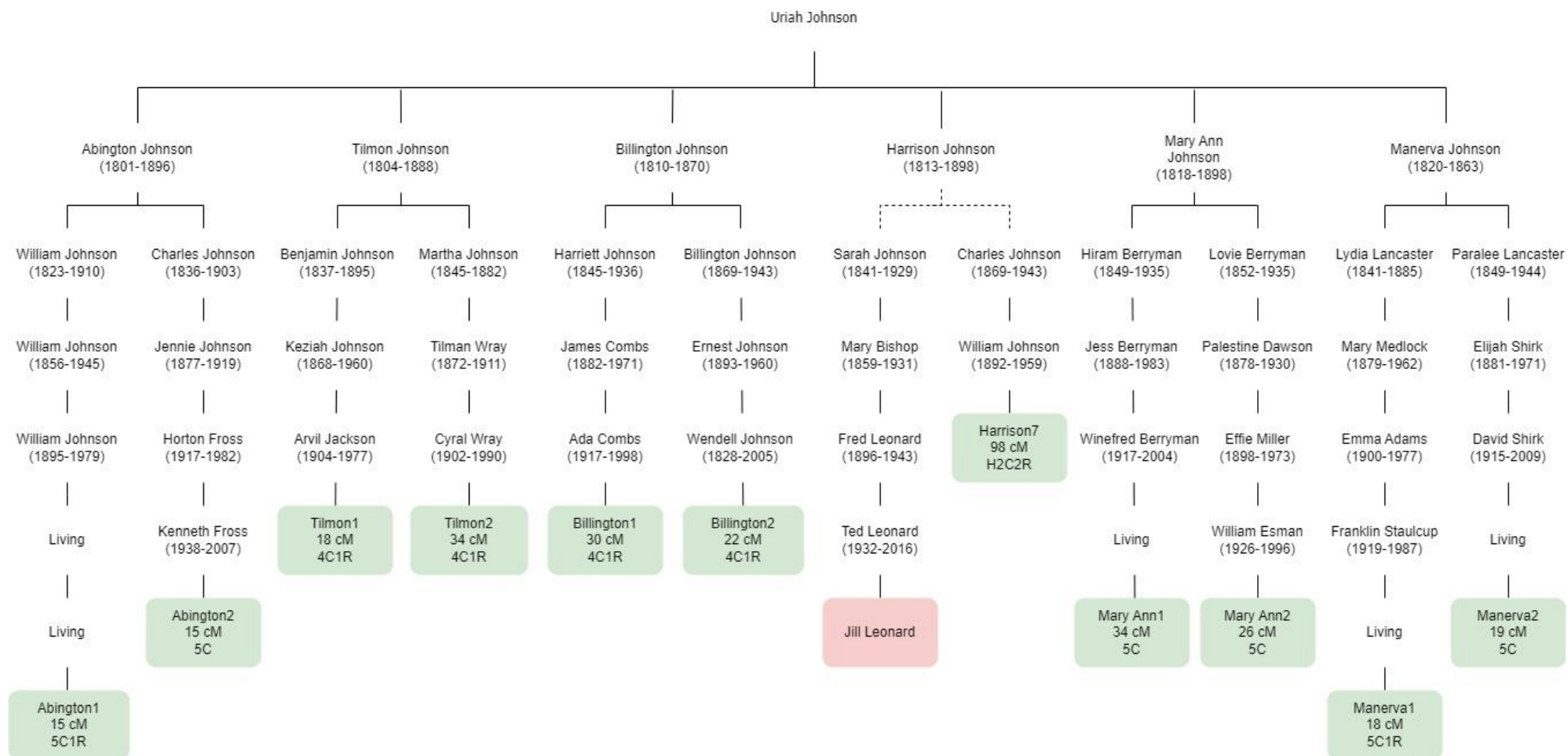


Figure 7. Correlation of Shared cM Among Uriah Johnson Descendants.
 (For shared cM with Jill Leonard, see Appendix.)

The shared cM for the traced relationships shown in figures 3–6, and recapped in table 3, all fall within acceptable ranges according to “The Shared cM Project” developed by Blaine T. Bettinger and others.

Table 3. DNA Analysis Between Jill Leonard and DNA Matches.

Match Name	Hypothesized Relationship	Shared cM	Average shared cM for relationship	Range of shared cM for relationship	Falls Within 1 Standard Deviation From Mean
Harrison1	1C	908	866	396–1,397	Yes
Robert Leonard	1C	998	866	396–1,397	Yes
Cindy Mork	1C	995	866	396–1,397	Yes
Tom Leonard	Sibling	2,629	2,613	1,613–3,488	Yes
Cora Leonard	Sibling	2,703	2,613	1,613–3,488	Yes
NissenD	2C	147	229	41–592	Yes
Harrison2	2C	208	229	41–592	Yes
Harrison3	2C1R	†206	122	14–353	1 Higher
Michael Baney	2C1R	†203	122	14–353	1 Higher
Harrison4	Half 3C1R	49	37	0–139	Yes
Harrison5	Half 3C1R	26	37	0–139	Yes
Harrison6	Half 3C1R	35	37	0–139	Yes
Harrison7	Half 2C2R	†98	48	0–144	1 Higher
Clinton Cody Trammell	Half 4C	*27	28	0–126	Yes
Abington1	5C1R	15	21	0–80	Yes
Abington2	5C	15	25	0–117	Yes
Tilmon1	4C1R	18	28	0–126	Yes
Tilmon2	4C1R	34	28	0–126	Yes
Billington1	4C1R	30	28	0–126	Yes
Billington2	4C1R	22	28	0–126	Yes
Mary Ann1	5C	34	25	0–117	Yes
Mary Ann2	5C	26	25	0–117	Yes

Manerva1	5C1R	18	21	0-80	Yes
Manerva2	5C	19	25	0-117	Yes

Sources:

For shared cM with Jill Leonard, see Appendix. ... For average shared cM, range of shared cM, and percentages, see "The Shared cM Project 4.0 tool v4," *DNA Painter* (<https://dnainter.com/tools/sharedcmv4> : accessed 11 Mar 2024).

†Harrison3, Michael Baney, and Harrison7 share slightly more DNA than average with the author, but this could indicate that due to recombination they received more DNA from this branch of the family.

*The Shared cM Project does not list H4C probabilities, however, H4C is the same genetic distance as 4C1R, so that probability is represented here.

Since the descendants of each proposed child of Uriah Johnson are proven through a paper trail, and they all share acceptable amounts of shared cM for the theorized relationships shown in table 3, then Uriah Johnson was almost certainly the biological father of not only Abington (proven with the 1899 letter), but also Tilmon, Billington, Harrison, Mary Ann, and Manerva.

Conclusion

The objective of this research project was to test the hypothesis that Uriah Johnson was the biological father of Harrison Johnson using DNA evidence. Through a family letter written by Abington's son to his own son, it was previously proven that Abington was the child of Uriah Johnson and Jane Carrell. An authored source listed Abington, Tilmon, Billington, Mary Ann, and Manerva as the children of Uriah Johnson and Jane Carrell, however, Harrison was not on that list. Instead, the names "Herrington," "Woolington," and "Edgington" were given as "family tradition" for other sons. It was posited that "Herrington" may have been Harrison.

Generation by generation, DNA test takers and DNA matches were shown to be related through genealogical records as well as through acceptable ranges of shared cM. For the last generation—that is from the purported children to Uriah—two disparate descendancy lines from each child were used showing the likelihood that the shared DNA only came from Uriah Johnson and his wife. Several lines were used to prove Harrison's lineage.

The atDNA results for eight test takers and seventeen DNA matches show that there is a strong probability that Harrison, Tilmon, Billington, Mary Ann, and Manerva were the siblings of Abington Johnson. Since Abington Johnson was proven to be the son of Uriah, all six were almost certainly the biological children of Uriah Johnson.

Suggestions for Future Research

- Identify DNA matches at *AncestryDNA* and *MyHeritage* who are descendants of the siblings of Uriah Johnson to prove his father was Joel Johnson.
- Identify the parents of Jane Carrell.

APPENDIX A

Note: The citations for table 3 are the cumulative list for figures 4–7.

Figure 4 Citations

- "Match Compare for Harrison1," database report, *AncestryDNA* (<http://dna.ancestry.com> : accessed 21 Feb 2024), predicting Brother relationship with "Robert Leonard" sharing 45%–51% (2,514 cM) across 46 segments. [MRCA Richard Leonard; theorized relationship is brother.]
- "Match Compare for Robert Leonard," database report, *AncestryDNA* (<http://dna.ancestry.com> : accessed 21 Feb 2024), predicting Sister relationship with "Cindy Mork" sharing 45%–52% (2,553 cM) across 47 segments. [MRCA Richard Leonard; theorized relationship is sister.]
- "Match Compare for Harrison1," database report, *AncestryDNA* (<http://dna.ancestry.com> : accessed 21 Feb 2024), predicting Sister relationship with "Cindy Mork" sharing 46%–52% (2,566 cM) across 41 segments. [MRCA Richard Leonard; theorized relationship is sister.]
- "Match Compare for Tom Leonard," database report, *AncestryDNA* (<http://dna.ancestry.com> : accessed 21 Feb 2024), predicting 1st-2nd cousin relationship with "Cindy Mork" sharing 17% (1,207 cM) across 35 segments. [MRCA Fred Merven Leonard; theorized relationship is 1C.]
- "Match Compare for Tom Leonard," database report, *AncestryDNA* (<http://dna.ancestry.com> : accessed 21 Feb 2024), predicting 1st-2nd cousin relationship with "Robert Leonard" sharing 12% (832 cM) across 25 segments. [MRCA Fred Merven Leonard; theorized relationship is 1C.]
- "Match Compare for Tom Leonard," database report, *AncestryDNA* (<http://dna.ancestry.com> : accessed 21 Feb 2024), predicting 1st-2nd cousin relationship with "Harrison1" sharing 14% (949 cM) across 40 segments. [MRCA Fred Merven Leonard; theorized relationship is 1C.]
- "Match Compare for Jill Leonard," database report, *AncestryDNA* (<http://dna.ancestry.com> : accessed 26 Dec 2023), predicting Brother relationship with "Tom Leonard" sharing 47%–54% (2,629 cM) across 47 segments. [MRCA Ted Leonard; theorized relationship is brother.]
- "Match Compare for Jill Leonard," database report, *AncestryDNA* (<http://dna.ancestry.com> : accessed 26 Dec 2023), predicting 1st-2nd cousin relationship with "Cindy Mork" sharing 14% (995 cM) across 33 segments. [MRCA Fred Leonard; theorized relationship is 1C.]
- "Match Compare for Jill Leonard," database report, *AncestryDNA* (<http://dna.ancestry.com> : accessed 26 Dec 2023), predicting 1st-2nd cousin relationship with "Robert Leonard" sharing 14% (998 cM) across 32 segments. [MRCA Fred Leonard; theorized relationship is 1C.]
- "Match Compare for Jill Leonard," database report, *AncestryDNA* (<http://dna.ancestry.com> : accessed 26 Dec 2023), predicting 1st-2nd cousin relationship with "Harrison1" sharing 13% (908 cM) across 30 segments. [MRCA Fred Leonard; theorized relationship is 1C.]
- "Match Compare for Jill Leonard," database report, *AncestryDNA* (<http://dna.ancestry.com> : accessed 26 Dec 2023), predicting Sister relationship with "Cora Leonard" sharing 48%–55% (2,703 cM) across 45 segments. [MRCA Ted Leonard; theorized relationship is sister.]
- "Match Compare for Tom Leonard," database report, *AncestryDNA* (<http://dna.ancestry.com> : accessed 21 Feb 2024), predicting Sister relationship with "Cora Leonard" sharing 45%–51% (2,508 cM) across 40 segments. [MRCA Ted Leonard; theorized relationship is sister.]

- "Match Compare for Cora Leonard," database report, *AncestryDNA* (<http://dna.ancestry.com> : accessed 21 Feb 2024), predicting 1st-2nd cousin relationship with "Cindy Mork" sharing 19% (1,270 cM) across 37 segments. [MRCA Fred Merven Leonard; theorized relationship is 1C.]
- "Match Compare for Cora Leonard," database report, *AncestryDNA* (<http://dna.ancestry.com> : accessed 21 Feb 2024), predicting 1st-2nd cousin relationship with "Robert Leonard" sharing 15% (1,079 cM) across 35 segments. [MRCA Fred Merven Leonard; theorized relationship is 1C.]
- "Match Compare for Cora Leonard," database report, *AncestryDNA* (<http://dna.ancestry.com> : accessed 21 Feb 2024), predicting 1st-2nd cousin relationship with "Harrison1" sharing 14% (997 cM) across 29 segments. [MRCA Fred Merven Leonard; theorized relationship is 1C.]

Figure 5 Citations

- "Match Compare for Harrison2," database report, *AncestryDNA* (<http://dna.ancestry.com> : accessed 21 Feb 2024), predicting 2nd-3rd cousin relationship with "NissenD" sharing 2% (107 cM) across 6 segments. [MRCA Sarah Johnson; theorized relationship is 2C.]
- "Match Compare for Jill Leonard," database report, *AncestryDNA* (<http://dna.ancestry.com> : accessed 21 Feb 2024), predicting 2nd-3rd cousin with "Harrison2" sharing 3% (208 cM) across 8 segments. [MRCA Mary M. Bishop; theorized relationship is 2C.]
- "Match Compare for Jill Leonard," database report, *AncestryDNA* (<http://dna.ancestry.com> : accessed 21 Feb 2024), predicting 2nd-3rd cousin relationship with "NissenD" sharing 2% (147 cM) across 6 segments. [MRCA Mary M. Bishop; theorized relationship is 2C.]
- "Match Compare for Jill Leonard," database report, *AncestryDNA* (<http://dna.ancestry.com> : accessed 21 Feb 2024), predicting 2nd-3rd cousin relationship with "Harrison3" sharing 3% (206 cM) across 7 segments. [MRCA Sarah Johnson; theorized relationship is 2C1R.]
- "Match Compare for Harrison2," database report, *AncestryDNA* (<http://dna.ancestry.com> : accessed 21 Feb 2024), predicting 4th-6th cousin relationship with "Harrison3" sharing <1% (62 cM) across 4 segments. [MRCA Sarah Johnson; theorized relationship is 2C1R.]
- "Match Compare for NissenD," database report, *AncestryDNA* (<http://dna.ancestry.com> : accessed 21 Feb 2024), predicting 4th-6th cousin relationship with "Harrison3" sharing 2% (62 cM) across 4 segments. [MRCA Sarah Johnson; theorized relationship is 2C1R.]
- "Match Compare for Michael Baney," database report, *AncestryDNA* (<http://dna.ancestry.com> : accessed 20 Mar 2024), predicting 2nd-3rd cousin relationship with "Harrison3" sharing 5% (316 cM) across 14 segments. [MRCA Sarah Johnson; theorized relationship is 2C.]
- "Match Compare for Jill Leonard," database report, *AncestryDNA* (<http://dna.ancestry.com> : accessed 21 Feb 2024), predicting 2nd-3rd cousin relationship with "Michael Baney" (managed by pamypsoupmojo) sharing 3% (203 cM) across 10 segments. [MRCA Sarah Johnson; theorized relationship is 2C1R.]
- "Match Compare for Harrison2," database report, *AncestryDNA* (<http://dna.ancestry.com> : accessed 21 Feb 2024), predicting 4th-6th cousin relationship with "Michael Baney" sharing <1% (52 cM) across 4 segments. [MRCA Sarah Johnson; theorized relationship is 2C1R.]
- "Match Compare for NissenD," database report, *AncestryDNA* (<http://dna.ancestry.com> : accessed 21 Feb 2024), predicting 4th-6th cousin relationship with "Michael Baney" sharing 2% (52 cM) across 4 segments. [MRCA Sarah Johnson; theorized relationship is 2C1R.]

Figure 6 Citations

- "Match Compare for Jill Leonard," database report, *AncestryDNA* (<http://dna.ancestry.com> : accessed 2 Mar 2024), predicting 4th-6th cousin relationship with "Harrison4" sharing <1% (49 cM) across 4 segments. [MRCA Harrison Johnson; theorized relationship is half 3C1R.]
- "Match Compare for Jill Leonard," database report, *AncestryDNA* (<http://dna.ancestry.com> : accessed 2 Mar 2024), predicting 4th-6th cousin relationship with "Harrison5" sharing <1% (26 cM) across 3 segments. [MRCA Harrison Johnson; theorized relationship is half 3C1R.]
- "Match Compare for Jill Leonard," database report, *AncestryDNA* (<http://dna.ancestry.com> : accessed 21 Feb 2024), predicting 4th-6th cousin relationship with "Harrison6" (managed by [REDACTED]) sharing <1% (35 cM) across 2 segments. [MRCA Harrison Johnson; theorized relationship is half 3C1R.]
- "Match Compare for Jill Leonard," database report, *AncestryDNA* (<http://dna.ancestry.com> : accessed 16 Feb 2024), predicting 2nd-3rd cousin relationship with "Harrison7" (managed by [REDACTED]) sharing 98 cM across 5 segments. [MRCA Harrison Johnson; theorized relationship is half 2C2R.]
- "Match Compare for Jill Leonard," database report, *AncestryDNA* (<http://dna.ancestry.com> : accessed 2 Mar 2024), predicting 4th-6th cousin relationship with "Clinton Cody Trammell" sharing <1% (27 cM) across 3 segments. [MRCA Harrison Johnson; theorized relationship is half 4C.]

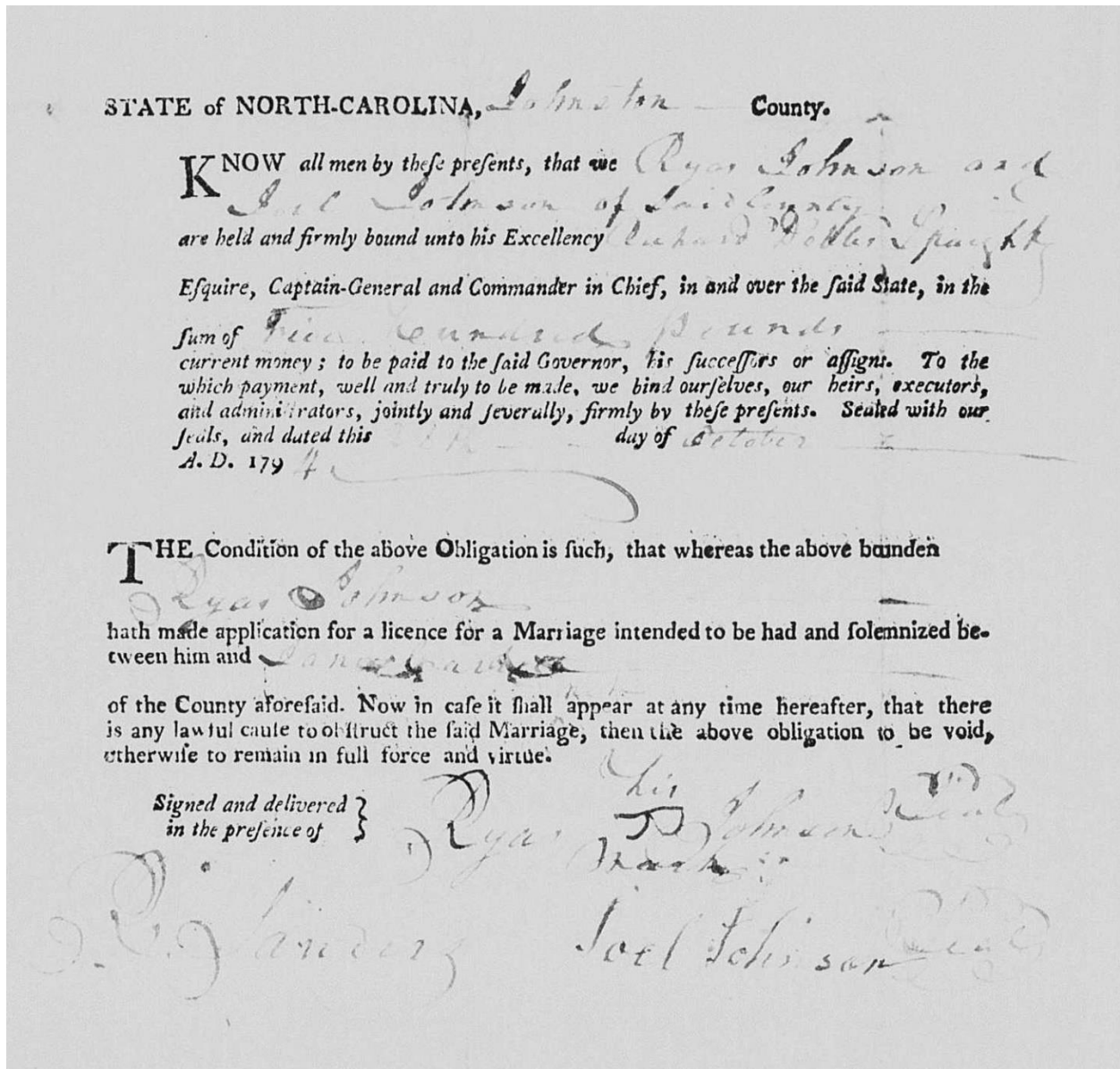
Figure 7 Citations

- "Match Compare for Jill Leonard," database report, *AncestryDNA* (<http://dna.ancestry.com> : accessed 16 Feb 2024), predicting 5th-8th cousin relationship with "Abington1" sharing <1% (15 cM) across 1 segment. [MRCA Uriah Johnson; theorized relationship is 5C1R.]
- "Match Compare for Jill Leonard," database report, *AncestryDNA* (<http://dna.ancestry.com> : accessed 19 Dec 2023), predicting 5th-8th cousin relationship with "Abington2" (managed by [REDACTED]) sharing <1% (15 cM) across 1 segment. [MRCA Uriah Johnson; theorized relationship is 5C.]
- "Match Compare for Jill Leonard," database report, *AncestryDNA* (<http://dna.ancestry.com> : accessed 16 Feb 2024), predicting 5th-8th cousin relationship with "Tilmon1" sharing <1% (18 cM) across 1 segment. [MRCA Uriah Johnson; theorized relationship is 4C1R.]
- "Match Compare for Jill Leonard," database report, *AncestryDNA* (<http://dna.ancestry.com> : accessed 19 Dec 2023), predicting 4th-6th cousin relationship with "Tilmon2" (managed by [REDACTED]) sharing <1% (34 cM) across 4 segments. [MRCA Uriah Johnson; theorized relationship is 4C1R.]
- "Match Compare for Jill Leonard," database report, *AncestryDNA* (<http://dna.ancestry.com> : accessed 19 Dec 2023), predicting 4th-6th cousin relationship with "Billington1" sharing <1% (30 cM) across 4 segments. [MRCA Uriah Johnson; theorized relationship is 4C1R.]
- "Match Compare for Jill Leonard," database report, *AncestryDNA* (<http://dna.ancestry.com> : accessed 16 Feb 2024), predicting 4th-6th cousin relationship with "Billington2" sharing <1% (22 cM) across 1 segment. [MRCA Uriah Johnson; theorized relationship is 4C1R.]
- "Match Compare for Jill Leonard," database report, *AncestryDNA* (<http://dna.ancestry.com> : accessed 16 Feb 2024), predicting 2nd-3rd cousin relationship with "Harrison7" (managed by [REDACTED]) sharing 98 cM across 5 segments. [MRCA Harrison Johnson; theorized relationship is half 2C2R.]
- "Match Compare for Jill Leonard," database report, *AncestryDNA* (<http://dna.ancestry.com> : accessed 25 Dec 2023), predicting 4th-6th cousin relationship with "Mary Ann1" sharing <1% (34 cM) across 1 segment. [MRCA Uriah Johnson; theorized relationship is 5C.]

- "Match Compare for Jill Leonard," database report, *AncestryDNA* (<http://dna.ancestry.com> : accessed 19 Dec 2023), predicting 4th-6th cousin relationship with "Mary Ann2" (managed by [REDACTED]) sharing <1% (26 cM) across 2shared segments [MRCA Uriah Johnson; theorized relationship is 5C.]
- "Match Compare for Jill Leonard," database report, *AncestryDNA* (<http://dna.ancestry.com> : accessed 16 Feb 2024), predicting 5th-8th cousin relationship with "Manerva1" sharing <1% (18 cM) across 1 segment. [MRCA Uriah Johnson; theorized relationship is 5C1R.]
- "Match Compare for Jill Leonard," database report, *AncestryDNA* (<http://dna.ancestry.com> : accessed 16 Feb 2024), predicting 5th-8th cousin relationship with "Manerva2" sharing <1% (19 cM) across 1 segment. [MRCA Uriah Johnson; theorized relationship is 5C.]

APPENDIX B

1794 Marriage Bond for Uriah Johnson and Jane Carrell - Document 1



Johnston County, North Carolina, marriage bonds, Johnson-Carrell, 28 Oct 1794; image, "Marriage bonds, v. F-K 1768-1868," *FamilySearch* (<http://familysearch.org> : accessed 11 May 2019); citing FSL microfilm 4364133, image 763. [Note: This collection is alphabetized by last name for volume, then semi-alphabetized within the volume.]

1820 US census Hickman Co, TN for Uriah Johnson - Document 2

The image shows two pages of a handwritten 1820 US census document for Uriah Johnson's household in Hickman County, Tennessee. The left page (p. 184) lists household members and their ages, with a red line underlining the household head and wife. The right page (p. 185) lists property values for various categories of slaves and other assets.

Name	Free white males					Free white females					Slaves				
	7	10	15	20	25	7	10	15	20	25	Male slaves	Female slaves	Other	Value	
Uriah Johnson	1					1					1	1			
Wife		1					1								
Children			1	1	1			1	1	1					
Property															

1820 U.S. census, Hickman County, Tennessee, population schedule, p. 185 (penned), line 6, Uriah Johnson household; image, Ancestry (<http://ancestry.com> : accessed 12 May 2019); citing NARA microfilm M33, roll 122.

1899 W.K. Johnson letter - Document 4

Princeton N.J.
March 16, 1899

Dear son - A.R. Johnson

Your letter of the 12th inst. is received, truly glad to hear from you again. Your Ma is now able to be doing her house work with my help - "Fena" is unwell but not seriously ill. Mable (Ira's orphan ch) is very low with pneumonia fever. Josephine is in poor health. Elva's babe 7 months old fell out of a chair against a hot stove which burned him badly on the side of the face and ear - the rest are all about as usual. You desire me to give you the names of some of our ancestry.

Your Grandfather, John B Ristine was born in Kentucky Nov 4, 1795 - was a soldier in 1812 and the Black Hawk - Indian war - your Grandma Ristine was Susan Hubbard born and raised in Georgia born June 13 - 1797

Your Grand-pa, Abington Johnson was born near Polka North Carolina Mar. 8 1801 - your Grand ma Johnson (Margaret Lockard) was born Nov 11 1804 at Lanesville Ohio. Her father, William Lockard was born in Ireland. His wife Mary Doll was born in Germany.

Your Great grandfather, Uriah Johnson was a native of North Carolina his wife, Jane Carr of Maryland. Your great grandfather Uriah Johnson was a 2nd cousin of Ex President Andrew Johnson. All of our ancestry are of the better class of people. I hope this will meet with your approval.

This "Copy" of the above letter of my grandfather Johnson is made this 31 day of December 1940 by

Howard Johnson

Your Pa
W.K. Johnson

while visiting at Uncle Orin's home in Dola Kansas.
ORIN JOHNSON SON OF W.K. Johnson

1850 US census Benton Co, MO for Billington Johnson - Document 6

SCHEDULE I. Free Inhabitants in *Fristo Township* **in the County of** *Benton* **State** *of Missouri* **enumerated by me, on the** *4th* **day of** *September* **1850:** *H. B. Bell* **Ass't Marshal**

Dwelling-house number outside of addition.	Family number in this order of visitation.	The Name of every Person whose usual place of abode on the first day of June, 1850, was in this family.	DESCRIPTION.			Profession, Occupation, or Trade of each Male Person over 15 years of age.	Value of Real Estate owned.	Place of Birth, Naming the State, Territory, or Country.	Whether within the year, 10 11 12 13 14 15 16 17 18 19 20 21 22 23 24 25 26 27 28 29 30 31 32 33 34 35 36 37 38 39 40 41 42 43 44 45 46 47 48 49 50 51 52 53 54 55 56 57 58 59 60 61 62 63 64 65 66 67 68 69 70 71 72 73 74 75 76 77 78 79 80 81 82 83 84 85 86 87 88 89 90 91 92 93 94 95 96 97 98 99 100	Whether deaf and dumb, blind, insane, idiotic, pauper, or convict.		
1	2	3	4	5	6	7	8	9	10	11	12	13
147	147	C. J. Walthell	37	m	W	Minister	360	Kentucky				
		Georgia Walthell	39	f				do				
		J. W. Walthell	14	m				do				
		Mary J. Walthell	13	f				do				
		J. B. Walthell	11	m				do				
		A. C. Walthell	10	f				do				
		Elizabeth Walthell	7	f				do				
		P. J. Walthell	6	f				Missouri				
		W. B. Walthell	1	m				do				
148	148	James W. Walthell	39	m		Farmer		Kentucky				
		Patience Walthell	35	f				do				
		Sarah A. Walthell	17	f				do				
		C. J. Walthell	16	m				do				
		Mary Walthell	13	f				do				
		Williams Walthell	6	m				Missouri				
		Martha Walthell	4	f				do				
		John Walthell	10	m				do				
		J. W. Walthell	1	m				do				
149	149	William C. Saunders	29	m		Farmer		Kentucky				
		Cassandra Saunders	30	f				do				
150	150	Ursula Thurman	52	m		Saddler	80	Tennessee				
		Margaret Thurman	47	f				do				
		Sarah Thurman	19	f				do				
		James Thurman	13	m				do				
		Mary Thurman	10	f				do				
151	151	Isidore Langford	71	m		Farmer	240	Virginia				
		Mildred Langford	60	f				do				
152	152	William Langford	29	m		Farmer		Tennessee				
		Sarah L. Langford	23	f				Kentucky				
		Minrod Langford	6	m				Missouri				
		J. M. Langford	3	m				do				
		J. M. Langford	2	f				do				
		M. J. Langford	1	f				do				
153	153	Billington Johnson	44	m		Farmer	248	North Carolina				
		Nancy Johnson	28	f				Kentucky				
		C. J. Johnson	14	f				Missouri				
		Martha Johnson	11	f				do				
		Mary Johnson	9	f				do				
		Harrell Johnson	5	f				do				
		M. A. Johnson	4	f				do				
		W. J. McCall	16	m		Labourer		do				
154	154	C. J. Conley	35	m		Blacksmith		Virginia				

H. B. Bell

1850 U.S. census, Benton County, Missouri, population schedule, Fristo Township, p. 283 [verso], dwelling 153, family 153, Billington Johnson household; image, Ancestry (http://ancestry.com : accessed 12 May 2019); citing NARA microfilm M432, roll 392.

1850 US census, Benton Co., MO, for Harrison Johnson, p. 568 - Document 7

568

SCHEDULE I.—Free Inhabitants in *Fristo Township* in the County of *Benton* State of *Missouri* enumerated by me, on the *seventh* day of *September* 1850. *Wm. Bell* Ass't Marshal.

Dwellings—houses numbered in the order of visitation.	Families numbered in the order of visitation.	The Name of every Person whose usual place of abode on the first day of June, 1850, was in this family.	DESCRIPTION.			Profession, Occupation, or Trade of each Male Person over 15 years of age.	Value of Real Estate owned.	Place of Birth. Naming the State, Territory, or Country.	Mined within the year. (School within the year.)	Whether deaf and dumb, blind, insane, idiotic, pauper, or convict.		
			Age.	Sex.	White, or of color.							
1	2	3	4	5	6	7	8	9	10	11	12	13
173	173	Sarah J. Smith	8	F	W			Indiana				
		Caroline Smith	6	F				Missouri				
		B. J. Smith	2	M				do				
		Larkin H. Harsney	5	M				do				
		W. J. Harsney	1	F				do				
174	174	James Robinson	50	M		Farmer ✓	320	South Carolina				
		Abraha Robinson	52	F				Kentucky ✓				
		Thomas Robinson	18	M		Farmer ✓		Tennessee ✓				
		B. J. Robinson	14	M				do ✓				
		Polly J. Robinson	11	F				Missouri				
		William Kirsch	50	M		Farmer ✓		Virginia ✓				
		Sarah Kirsch	23	F				Tennessee ✓				
		James Kirsch	5	M				Missouri				
		John Kirsch	3	M				do				
176	176	Abraham Cota	35	M		Farmer ✓		Tennessee ✓				
		Elizabeth Cota	32	F				do ✓				
		J. A. Cota	9	M				do ✓				
		Wm. H. Cota	8	M				do ✓				
		Mary J. Cota	6	F				Missouri				
		Eliza J. Cota	5	F				do				
		Ellen Cota	3	F				do				
		Joh. Cota	7	M				do				
178	178	Joseph Hooper	55	M		Farmer ✓	600	Tennessee ✓				
		Sarah Hooper	46	F				North Carolina ✓				
		George Hooper	22	M		Farmer ✓		Tennessee ✓				
		Adams Hooper	21	F				Kentucky ✓				
		James M. Hooper	1	M				Missouri				
		William Kirsch	16	F				Tennessee ✓				
		Nicholas Parsley	45	M		Blacksmith ✓		Virginia ✓				
177	177	Mary J. Moore	58	F		Baptist clergyman		do				
		Susan P. Moore	50	F				do				
		Sarah A. Moore	18	F				Tennessee ✓				
178	178	Fontaine L. Jones	19	M		Farmer ✓		do ✓				
		Zirina Jones	17	F				do ✓				
179	179	Dandray C. Saly	36	M		Farmer ✓		Kentucky ✓				
		Mary J. Saly	25	F				Tennessee ✓				
		Elizabeth Saly	7	F				Missouri				
		Abraham Saly	5	M				do				
		Frank Saly	3	F				do				
		Isaac J. Saly	2	M				do				
180	180	Harrison Johnson	37	M		Farmer ✓		Tennessee ✓				
		Sarah Johnson	27	F				Kentucky ✓				

Wm. Bell

1850 U.S. census, Benton County, Missouri, population schedule, Fristo Township, p. 568 (penned), dwelling 180, family 180, Harrison Johnson household; image, Ancestry (<http://ancestry.com> : accessed 12 May 2019); citing NARA microfilm M432, roll 392.

1850 US census, Benton Co., MO, for Harrison Johnson, p. 569 - Document 7a

286
569

SCHEDULE I. - Free Inhabitants in *Union Township* **in the County of** *Benton* **State** *Missouri*
of *Missouri* **enumerated by me, on the** *17th* **day of** *September* **1850.** *J. D. Bell* Ass't Marshal

1	2	3	4			7	8	9	10	11	12	13
			Age	Sex	Color							
180	180	William Johnson	41	M	W			Missouri				
		Sarah J. Johnson	9	F				do				
		Conity Johnson	7	F				do				
		Marion A. Johnson	5	F				do				
		Nancy C. Johnson	1	F				do				
181	181	Gray W. Sharp	32	M		Farmer	✓	Kentucky	✓			
		Sarah Sharp	23	F				do	✓			
		Mary A. Sharp	5	F				Missouri				
		William D. Sharp	3	M				do				
		James J. Sharp	1	M				do				
182	182	Joseph M. Carty	50	M		Farmer	✓	Virginia	✓			
		Sarah M. Carty	48	F				Georgia	✓			
		Leslie Brown	15	F				Missouri				
183	183	Bredley Corumb	37	M		Farmer	✓	Kentucky	✓			
		Elizabeth Corumb	32	F				do	✓			
		Elizabeth Corumb	18	F				Illinois				
		Lincy A. Corumb	10	F				Missouri				
		Gray W. Corumb	9	M				do				
		Sarah Corumb	7	F				do				
		Loretta Corumb	5	F				do				
		Joseph Corumb	1	M				do				
184	184	William P. Hays	25	M		Farmer	✓	Kentucky	✓			
		Nancy Hays	19	F				do	✓			
		John C. Hays	2	M				Missouri				
		Lucy J. Hays	7/2	F				do				
185	185	Elizabeth Dawson	41	F				181	South Carolina	✓	1	
		William B. Dawson	31	M		Farmer	✓	Georgia	✓			
		Big Dawson	19	M		do	✓	do	✓			
		Matha Dawson	17	M		do	✓	Missouri				
		Sarah Dawson	13	F				do				
		Lucinda Dawson	10	F				do				
		James Dawson	8	M				do				
		Mary Dawson	5	F				do				
		Mary J. Malcolin	31	F				Indiana				
186	186	George Richardson	27	M		Farmer	✓	180	Virginia	✓	1	
		Nancy A. Richardson	24	F				Missouri				
		James W. Richardson	3	M				do				
		Annathia Richardson	1	F				do				
		James Corberry	18	M		Farmer	✓	do				
		Caroline Corberry	11	F				do				
		Agnes Corberry	3/3	F				Virginia	✓	2/5		
187	187	Coloph. Doty	81	M		Farmer	✓	320	New York			

1850 U.S. census, Benton County Missouri, population schedule, Union Township, p. 286 (stamped), p. 569 (penned), dwelling 180, family 180, continuation of Harrison Johnson household; image, Ancestry (<http://ancestry.com> : accessed 12 May 2019); citing NARA microfilm M432, roll 392.

1860 US census Benton Co, MO for Billington Johnson - Document 8

Page No. 49

SCHEDULE 1—Free Inhabitants in Township 39 Range 21 in the County of Benton State Missouri enumerated by me, on the 24 day of August 1860. Chas. H. Clark Ass't Marshal.

Post Office Marion

1	2	3	4			7	8		10	11	12	13	14
			Age	Sex	Color		Value of Real Estate	Value of Personal Estate					
		Mary Hegley	5	F					Mo				
		L Susan	4	F					"				
		Alco	5	M					"				
233	233	Eliza L. Stanley	40	M		Farmer	1150	680	Virginia	✓			
		Elizabeth	36	F					Texas	✓		1	
		Walter	18	M		St. L.			Mo				
		Mary	14	F					"				
		Martha	11	F					"			1	
234	234	William Johnson	50	M		Farmer	1535	1861	North Carolina	✓			
		Nancy	49	F					Ky	✓		1	
		Mary	17	F					Mo			1	
		Harriet	15	F					"			1	
		William	11	M					"			1	
		William	4	M					"				
		Abraham	1	M					"				
		John Ashley	22	M		St. L.			North Carolina	✓			
235	235	Pinrod Sanford	54	M		Farmer	500	159	Tenn	✓			
		William	20	M		St. L.			Mississippi	✓		1	1
		Abraham	18	M		St. L.			"			1	
		James	14	M					"	✓			
		Mary	13	F					Louisiana	✓			
		Pinrod	11	M					"	✓		1	1
236	236	John L. Hoar	22	M		Farmer Tenant		99	Ill.	✓			
		Elizabeth	24	F					Mo				
		Mary	1	F					"				
237	237	Sandridge Talley	38	M		Farmer	400	869	Ky	✓			1
		Mercer	35	F					Texas	✓			
		Mary	17	F					Mo			1	
		Abraham	15	M		St. L.			"			1	
		Isaac	11	M					"			1	
		Alfred	9	M					"			1	
		John	6	M					"				
		Marah	3	F					"				
		Henry	2	M					"				
238	238	Samy M. Ashley	28	M		St. L.		18	North Carolina	✓			
		Mary	31	F					Mo				
		Ann	2	F					"				
		Doris	5	M					"				
		John Ashley	50	M					South Carolina	✓			

No. white males, 24 No. colored males, _____ No. foreign born, _____ No. blind, _____
 No. white females, 17 No. colored females, _____ No. deaf and dumb, _____ No. insane, _____
 3505 3191 No. Mute, _____ No. pauper, _____ No. convicts, _____

1860 U.S. census, Benton County, Missouri, population schedule, Township 39 Range 21, p. 49, dwelling 233, family 231, Billington [s/c] Johnson household; image, Ancestry (http://ancestry.com : accessed 12 May 2019); citing NARA microfilm M653, roll 607.

1860 US census Benton Co, MO for Harrison Johnson - Document 9

281

Page No. 55

SCHEDULE 1.—Free Inhabitants in Township 39 Range 21 in the County of Benton State of Missouri enumerated by me, on the 18 day of June 1860. (Chas. A. Clark Ass't Marshal. Post Office Mansau

1	2	3	4			7	8		10	11	12	13	14
			Age	Sex	Color		Value of Real Estate	Value of Personal Estate					
1		William F. Head	4	M									
2		Joseph	8	M									
3	266 264	Martha Buntan	29	F		Housewife	88	296	Tenn	✓			
4		Harriet	17	F									
5		James	18	M		S L							
6		Harriet	13	M									
7		John	10	M									
8		William	4	M									
9		Rachel	5	F									
10	267 265	Joseph McHarty	49	M		Farmer (Agultur)		90	Virgin	✓			
11		Martha	6	F									
12		Sarah Ann Haly	29	F		House Servant		75				1	
13		George	13	M									
14		Henry	11	M									
15		Martha	5	F									
16		Mary	6	F									
17		John	6	M									
18		John Anderson	30	M				400	78	Ohio	✓		
19		James	21	M									✓
20		Lisa	3	F									
21	268 266	Harrison Johnson	46	M		Farmer (Agultur)			81	Tenn	✓		1
22		Martha	24	F									1
23		Mary	1	F									
24		Harriet	3	F									
25		John Ann	3	F									
26		Mary	18	F									1
27		Mary Ann Johnson	11	F									1
28													
29													
30													
31													
32													
33													
34													
35	269 267	John P. McHarty	45	M		Farmer		800	660	Iy	✓		1
36		Sarah	41	F									
37		Josephus	14	M									1
38		Mary	11	F									1
39	270 268	James W. Abernethy	40	M				790	480				
40													

m. 175
f. 15

Township 39 Range 21 June 28 1860

No. white males, 3	No. colored males, _____	No. foreign born, _____	No. blind, _____	3,390	2,417	No. idiotic, _____
No. white females, 2	No. colored females, _____	No. deaf and dumb, _____	No. insane, _____			No. paupers, _____
						No. convicts, _____

7/10

1860 U.S. census, Benton County, Missouri, population schedule, Township 39 Range 21, p. 55 (penned), dwelling 268, family 266, Harrison Johnson household; image, Ancestry (<http://ancestry.com> : accessed 12 May 2019); citing NARA microfilm M653, roll 117.

1860 census Benton Co, MO for William Berryman- Document 10

Page No. 27

SCHEDULE 1.—Free Inhabitants in Township 39 Range 21 in the County of Benton State of Missouri enumerated by me, on the 30th day of June 1860. W. H. Clark Ass't Marshal
 Post Office Warsaw

Dwelling-house in which the individual is enumerated in the order of valuation.	The name of every person whose usual place of abode on the first day of June, 1860, was in this family.	Description.			Profession, Occupation, or Trade of each person, male and female, over 15 years of age.	VALUE OF ESTATE OWNED.		Place of Birth, Naming the State, Territory, or Country.	Whether deaf and dumb, blind, insane, idiotic, pauper, or convict.				
		Age.	Sex.	Color.		Value of Real Estate.	Value of Personal Estate.						
1	2	3	4	5	6	7	8	9	10	11	12	13	14
1	Sarah Davis	2:1	F						Mo ✓				
2	William	18	M						Mo				
3	Mary	18	F						"				
4	John	8	M						"				
5	Samuel	7	M						"				
6	Sarah	5	F						"				
7	261 262 William Cash	48	M		Wm B. Smith	400	611	and baronica ✓					
8	Elizabeth	36	F						Mo ✓				
9	Marston	18	M						Mo ✓				
10	John	16	M						Mo ✓				
11	Mary	15	F						Mo ✓				
12	Milton	9	M						"				
13	Amelia	7	F						"				
14	Ellen	2	F						Mo				
15	262 260 William Berryman	39	M		Dr. L.		281	281	Ill ✓			1	
16	Mary Anne	40	F						" ✓				
17	Elizabeth	15	M		Dr. L.				" ✓			1	
18	Wendell	17	M		Dr. L.				" ✓			1	
19	Annemette	15	F						" ✓			1	
20	Lyndia	11	F						" ✓			1	
21	Margaret	11	F						" ✓			1	
22	Alexander	11	M						" ✓			1	
23	Lewis	8	M						" ✓			1	
24	Williamina	6	F						" ✓			1	
25	Landon	3	M						Mo				
26	Samy	1	M						"				
27	262 262 John S. Williams	37	M		Farmer	100	321	321	Mo ✓				
28	Margaret	27	F						Mo				
29	Martha	3	F						"				
30	Louisa	2	F						"				
31	Alex. Harp	11	F						"				
32	264 262 Henry Reed	21	M		Farmer	40	180	180	Mo ✓			1	
33	Lydia	19	F						" ✓			1	
34	Leopoldina	1	F						Mo				
35	Martha Reed	56	M		Wm Carpenter		50	50	Pruss ✓				
36	George	18	M		Labourer				Pruss ✓				
37	262 262 Miles T. Hood	23	M		Farmer	160	175	175	Mo ✓				
38	Elizabeth	23	F						Mo				
		No. white males, 20	No. colored males, —	No. foreign born, —	No. blind, —	1,100	2,180		No. idiotic, —				
		No. white females, 19	No. colored females, —	No. deaf and dumb, —	No. insane, —				No. paupers, —				

1860 U.S. census, Benton County, Missouri, population schedule, Township 39 Range 21, p. 54 (penned), dwelling 262, family 260, William Berryman household; image, Ancestry (http://ancestry.com : accessed 1 Oct 2023); citing NARA microfilm M653, roll 607.

1850 US census McNairy Co, TN for William Berryman- Document 11

SCHEDULE I.—Free Inhabitants in the 6th District in the County of McNairy State of Tennessee enumerated by me, on the 6th day of Sept 1850. B. B. Adams Ass't Marshal

Dwelling-house numbered in the order of visitation.	Family numbered in the order of visitation.	The Name of every Person whose usual place of abode on the first day of June, 1850, was in this family.	DESCRIPTION.			Profession, Occupation, or Trade of each Male Person over 15 years of age.	Value of Real Estate owned.	PLACE OF BIRTH. Naming the State, Territory, or Country.	Married within the year. At what time within the year. Persons over 20 years of age who were never married.	Whether deaf and dumb, blind, insane, idiotic, pauper, or convict.		
			Age.	Sex.	Color (Black or mulatto).							
1	2	3	4	5	6	7	8	9	10	11	12	13
		Robert "	1	M				Ten				
196	196	William Berryman	29	M		Farmer		Ten			/	
		Mary Ann "	30	F				Ten			/	
		Clairborn "	9	M				Ten			/	
		Abraham "	7	M				Ten			/	
		Ann "	5	F				Ten				
		Emurinta "	5	F				Ten				
		Margarett "	5	F				Ten				
		Aaram "	1	M				Ten				
197	197	Clairborn Berryman	63	M		Farmer		N.C.				
		Betsy "	62	F				N.C.			/	
		Weg Forbush	35	F				Ten			/	
		Martha "	16	F				Ten				
		Jackson Berryman	18	M		Laborer		Ten				
198	198	Henderson Fegerson	29	M		Farmer	500	Ten				
		Mary Ann "	20	F				Ten				
		Mary "	4	F				Ten				
		James "	1	M				Ten				
		Joshua Fegerson	23	M		Laborer		Ten				
		Pinkney Runaway	10	M		Laborer		Ten			/	
199	199	John S. McCalpin	40	M		Farmer	2,000	Ten				
		Lucinda "	39	F				Ten				
		Ann "	19	F				Ten			/	
		Louisa Jane "	17	F				Ten				
		John "	15	M				Ten			/	
		William "	13	M				Ten			/	
		Hugh "	11	M				Ten			/	
		Mary Ann "	9	F				Ten				
		Lucinda "	3	F				Ten				
200	200	John Stiger	44	M		Farmer	150	Ten			/	
		Nancy "	33	F				Ten			/	
		Mary Ann "	17	F				Ten				
		Harriet "	13	M				Ten				
		Esther "	11	F				Ten				
		Nancy "	9	F				Ten				
		Malissa "	7	F				Ten				
		Elizabeth "	5	F				Ten				
		Charles "	12	M				Ten				
201	201	James Stiger	23	M		Farmer	175	Ala			/	
		Clarinda "	21	F				Ten			/	
		James "	11	M				Ten				
		Margarett Stiger	29	F				Ala			/	

10 m.
12 f.

1850 U.S. census, McNairy County, Tennessee, population schedule, 6th District, p. 15 [verso], dwelling 196, family 196, William Berryman household; image, Ancestry (<http://ancestry.com> : accessed 1 Oct 2023); citing NARA microfilm M432, roll 888.

